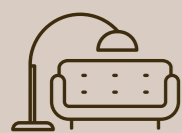


## Abitazione 9

45 m<sup>2</sup>



PIANO SECONDO



SOGGIORNO-CUCINA



1 CAMERA DA LETTO



1 BAGNO



GARAGE 14,00 m<sup>2</sup>



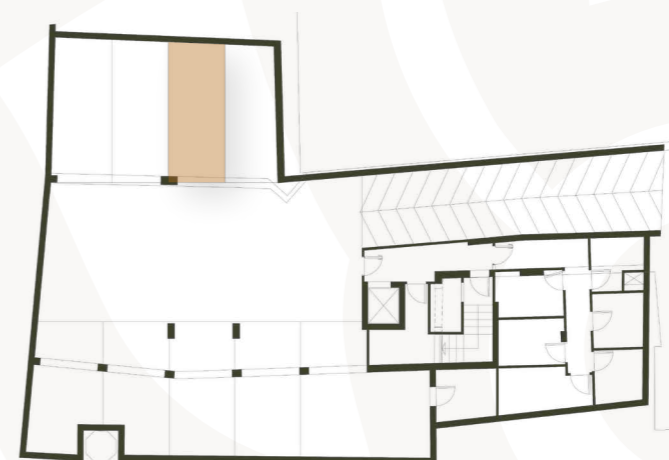
Scala 1:75



Piano secondo



Piano interrato GARAGE E CANTINE



Piano secondo

